



Date: March 19, 2010

Regarding: **Motorcycle Thefts and Recoveries in the United States 2006-2009**  
**(External Dissemination)**

Prepared By: Erin Dugan, Strategic Analyst

This Strategic Report analyzes motorcycle thefts and recoveries for 2006 through 2009 in the United States (U.S.), including the District of Columbia (D.C.) and Puerto Rico. For the purposes of this report, the National Crime Information Center (NCIC) data from 2006 through 2009 was reviewed for thefts and recoveries of motorcycles by analyzing the NCIC Make, Model, and Style fields.

This report is divided into three sections. The first section analyzes motorcycle thefts in the U.S. from 2006 through 2009 based on Theft Year, Theft Month, Theft State, and motorcycle Make. The second section analyzes motorcycle recoveries in the U.S. from 2006 through 2009, based on Theft Year, Recovery Month, Recovery State, and motorcycle Make. The third section offers conclusions based upon the analysis of the gathered data.

## Executive Summary

Analysis of the NCIC data from 2006 through 2009 indicates a decrease in the number of motorcycle thefts for each year. The most significant decrease in thefts was a 13.0% decline between 2008 (64,492 thefts) and 2009 (56,093 thefts). At the same time, the motorcycle recovery rate has also declined during each year. However, it should be noted that the earlier the date of theft, the more time the theft has an opportunity to be recovered.

Motorcycle thefts are decreasing; however, according to the Motorcycle Industry Council (MIC)<sup>1</sup>, the opportunity to steal motorcycles in the first place is also decreasing based on a considerable decrease in motorcycle production and sales. The MIC reports that domestic motorcycle sales peaked in 2005 (nearly 1,100,000 units sold) and have declined every year through 2009. Similar to the NCIC figures on motorcycle thefts, the most significant decrease in motorcycle sales was between 2008 (879,910 units) and 2009 (520,502 units), a 40.8% decrease.

Motorcycle production is another contributing factor in the decline of motorcycle thefts. Many motorcycle companies are closing facilities or limiting products in response to the current troubled sales market. For example, the Japanese Automobile Manufacturers Association (JAMA)<sup>2</sup> identified a 47.4% decrease in production between 2008 (1,226,839 units) and 2009 (644,901 units). According to JAMA, this was most significant decrease as motorcycle production has declined for four consecutive years.

<sup>1</sup> The MIC's figures include data reported by 19 manufacturers: Aprilia, Arctic Cat, BMW, Buell, Can-Am, Ducati, Harley-Davidson, Honda, Husaberg, Kawasaki, KTM, Moto Guzzi, Piaggio, Polaris, Suzuki, Triumph, Vespa, Victory and Yamaha.

<sup>2</sup> The JAMA's figures include data reported by 14 manufacturers: Nissan, Honda, Hino, Suzuki, Toyota, UD Trucks, Mazda, Kawasaki, Mitsubishi Motors, Daihatsu, Fuji Heavy Industries LTD., Isuzu, Yamaha, Fuso.

Note: if a motorcycle manufacturer is not a member of MIC or JAMA, their sales and production may not be reflected in these numbers

Overall, motorcycle thefts have been declining each year since 2006; however, it should be taken into consideration that motorcycle sales and production have also followed this trend. The most significant decline in motorcycle thefts between 2008 and 2009 was only 13.0% compared to a 40.8% decline in motorcycle sales and 47.4% decline in motorcycle production during the same time frame. During recent tough economic times, motorcycles sales have declined, consequently influencing a slower production rate; therefore, affecting the declining motorcycle theft trend.

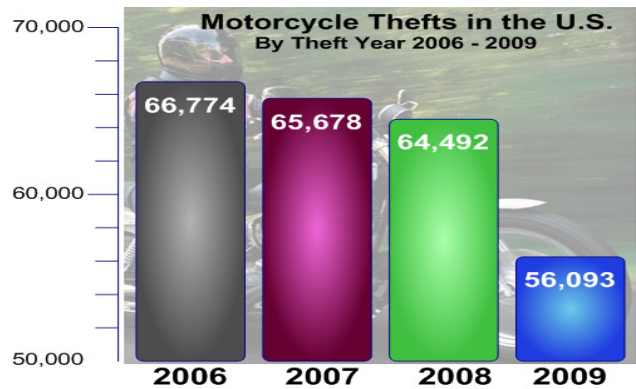
## SECTION 1: Motorcycle Thefts in the U.S. 2006-2009

This section analyzes motorcycle thefts in the U.S. from 2006 through 2009. There were 253,037 motorcycle thefts in the U.S. during the aforementioned date parameters. The following subsections further analyze these 253,037 motorcycle thefts by Year, Month, State, and Make. Imperative

### Motorcycle Thefts: By Theft Year

The following graph shows motorcycle thefts in the U.S. from 2006 through 2009 by Theft Year. There were 253,037 motorcycle thefts in the U.S. during this time frame.

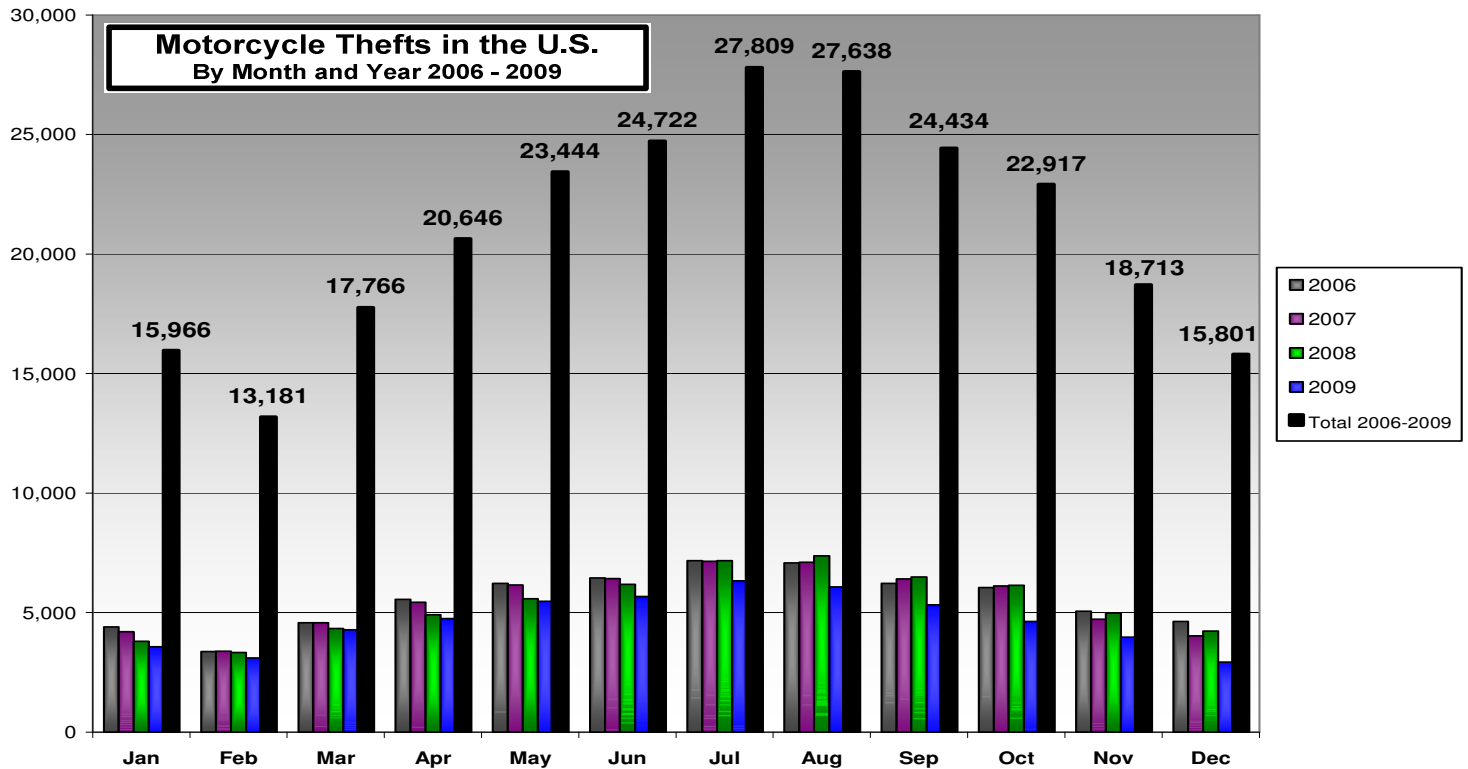
The number of motorcycle thefts declined each year from 2006 through 2009. The largest decrease in motorcycle thefts occurred between 2008 and 2009 with a decline of 13.0%.



### Motorcycle Thefts: By Theft Month and Year

The following graph shows motorcycle thefts in the U.S. from 2006 through 2009 by Theft Month and Year. In general, motorcycle theft is a seasonal crime related to warmer months, as July and August had the most motorcycle thefts from 2006 through 2009 (27,809 motorcycle thefts in July and 27,638 in August). December, January, and February were the months with the fewest motorcycle thefts (15,801 in December; 15,966 in January; and 13,181 in February).

	2006	2007	2008	2009	Total 2006-2009
<b>Jan</b>	4,397	4,203	3,796	3,570	15,966
<b>Feb</b>	3,366	3,381	3,334	3,100	13,181
<b>Mar</b>	4,581	4,570	4,330	4,285	17,766
<b>Apr</b>	5,558	5,422	4,911	4,755	20,646
<b>May</b>	6,231	6,160	5,580	5,473	23,444
<b>Jun</b>	6,456	6,421	6,173	5,672	24,722
<b>Jul</b>	7,171	7,143	7,176	6,319	27,809
<b>Aug</b>	7,079	7,111	7,369	6,079	27,638
<b>Sep</b>	6,215	6,408	6,489	5,322	24,434
<b>Oct</b>	6,046	6,114	6,136	4,621	22,917
<b>Nov</b>	5,054	4,717	4,972	3,970	18,713
<b>Dec</b>	4,620	4,028	4,226	2,927	15,801
<b>Totals</b>	<b>66,774</b>	<b>65,678</b>	<b>64,492</b>	<b>56,093</b>	<b>253,037</b>



### Motorcycle Thefts: By Theft State

The following table shows the number of motorcycle thefts in the U.S. by Theft State (including Washington D.C. and Puerto Rico) from 2006 through 2009. The chart ranks the states based on the total number of motorcycle thefts for all years 2006 through 2009. There were 253,037 motorcycle thefts in the U.S. from 2006 through 2009. An asterisk (\*) represents a tie in the total number of motorcycle thefts 2006 through 2009. (161 motorcycle thefts did not identify a Theft State).

Rank	State	2006	2007	2008	2009	Total 2006 - 2009
1	CA	8,151	7,807	7,362	6,273	29,593
2	FL	6,098	6,625	6,283	5,009	24,015
3	TX	5,824	5,684	6,090	5,526	23,124
4	NC	3,159	3,156	3,363	3,045	12,723
5	OH	2,307	2,350	2,021	1,823	8,501
6	IN	1,987	2,128	2,337	1,902	8,354
7	SC	1,829	1,850	2,272	2,002	7,953
8	MD	1,975	1,983	2,135	1,538	7,631
9	GA	1,811	1,737	1,840	2,067	7,455
10	NY	1,872	1,811	1,906	1,756	7,345
*11	AZ	2,291	2,033	1,742	1,172	7,238
*11	PA	2,104	1,918	1,650	1,566	7,238
13	MO	1,571	1,586	1,650	1,246	6,053
14	WA	1,838	1,509	1,164	1,128	5,639

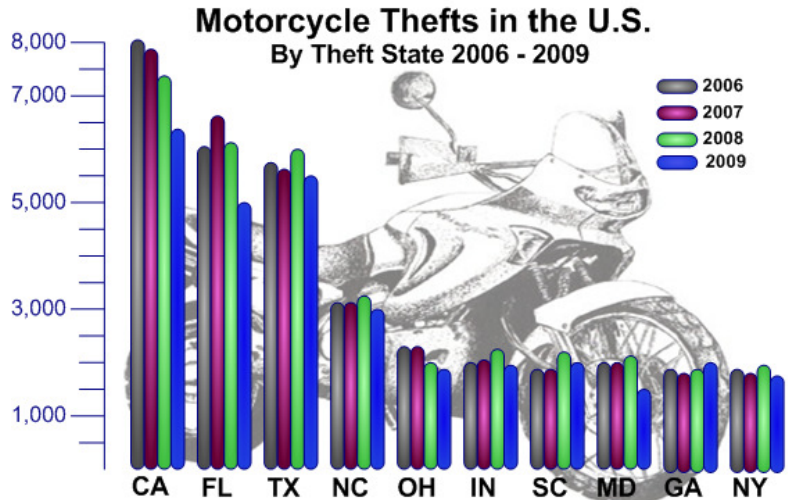
Motorcycle Thefts and Recoveries in the United States 2006-2009 (External Dissemination)

March 19, 2010

Page 4 of 11

Rank	State	2006	2007	2008	2009	Total 2006 - 2009
15	MI	1,458	1,554	1,363	1,259	5,634
16	VA	1,394	1,323	1,509	1,405	5,631
17	AR	1,427	1,316	1,389	1,212	5,344
18	IL	1,264	1,162	1,148	1,050	4,624
19	NV	1,418	1,147	977	855	4,397
20	TN	922	1,095	1,234	1,089	4,340
21	PR	1,289	1,307	1,068	649	4,313
22	KY	1,072	1,152	1,067	973	4,264
23	AL	1,220	1,220	985	832	4,257
24	LA	949	1,073	1,052	889	3,963
25	NJ	1,103	935	1,047	828	3,913
26	OK	960	928	997	924	3,809
27	CO	1,107	898	970	832	3,807
28	MA	1,087	919	811	875	3,692
29	MS	831	970	878	836	3,515
30	NM	556	604	768	682	2,610
31	MN	728	706	562	449	2,445
32	WI	577	569	714	476	2,336
33	CT	534	491	563	593	2,181
34	KS	543	669	493	424	2,129
35	OR	583	511	493	414	2,001
36	UT	410	519	343	338	1,610
37	IA	423	397	289	300	1,409
38	DE	255	214	256	231	956
39	HI	202	246	270	225	943
40	WV	171	236	240	228	875
41	ID	251	251	168	131	801
42	NH	177	150	128	142	597
43	RI	176	100	123	123	522
44	NE	132	145	122	120	519
45	MT	148	136	105	107	496
46	DC	90	111	105	161	467
47	WY	93	94	76	87	350
48	ME	67	89	95	90	341
49	AK	140	78	59	51	328
50	VT	77	76	87	62	302
51	SD	36	49	47	50	182
52	ND	23	23	27	38	111
	<i>Unknown</i>	64	38	49	10	161
	<b>Total States</b>	<b>66,774</b>	<b>65,678</b>	<b>64,492</b>	<b>56,093</b>	<b>253,037</b>

The following graph shows the Top 10 States with the greatest number of motorcycle thefts in the U.S. from 2006 through 2009. The Top 10 States accounted for 136,694 motorcycle thefts, or 54.0%, of the 253,037 motorcycle thefts. The state with the most motorcycle thefts was California with 29,593 motorcycle thefts, or 11.7%, of the total number of motorcycle thefts. Of the Top 10 States, California was the only state with decreasing numbers of motorcycle thefts for each year from 2006 through 2009. Georgia was the only Top 10 state that had an increase in motorcycle thefts from 2007 through 2009, an increase of 19.0%.

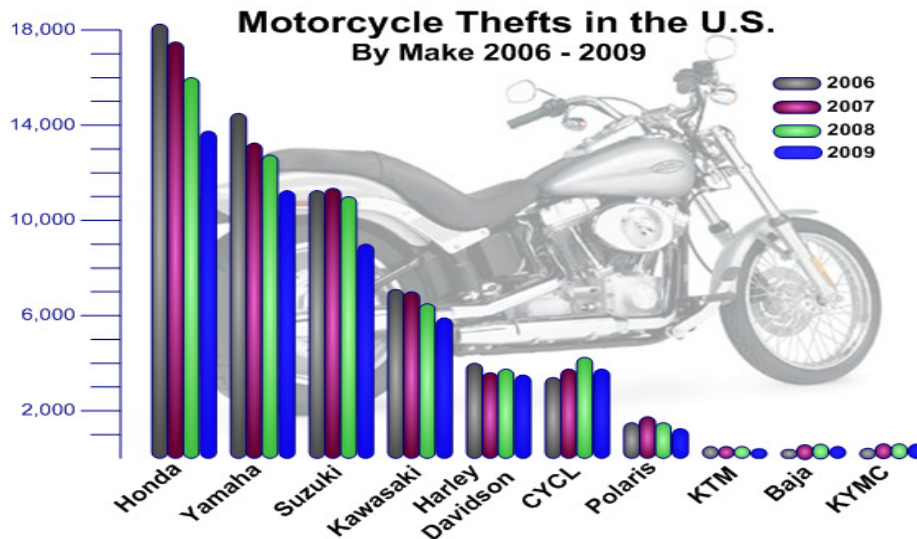


### Motorcycle Thefts: By Motorcycle Make

A total of 822 different motorcycle Makes were identified within the 253,037 motorcycle thefts in the U.S. from 2006 through 2009. The following graphs display the Top 10 Makes with the greatest number of motorcycle thefts from 2006 through 2009. The Top 10 motorcycle Makes accounted for 227,866 motorcycle thefts, or 90.1%, of the 253,037 motorcycle thefts. The Top 10 Make with the most motorcycle thefts was Honda with 65,564 thefts, or 25.9% of all motorcycle thefts.

\*"CYCL" is used when the make is unknown or not listed.

Rank	Make	2006	2007	2008	2009	Total 2006-2009
1	Honda	18,536	17,403	15,937	13,688	65,564
2	Yamaha	14,358	13,395	12,572	11,148	51,473
3	Suzuki	11,128	11,270	10,999	9,154	42,551
4	Kawasaki	7,177	7,020	6,691	5,911	26,799
5	Harley Davidson	4,069	3,851	3,954	3,529	15,403
6	CYCL*	3,298	3,628	4,398	3,681	15,005
7	Polaris	1,589	1,717	1,583	1,271	6,160
8	KTM	500	518	560	440	2,018
9	Baja	196	412	483	428	1,519
10	KYMC	291	345	379	359	1,374





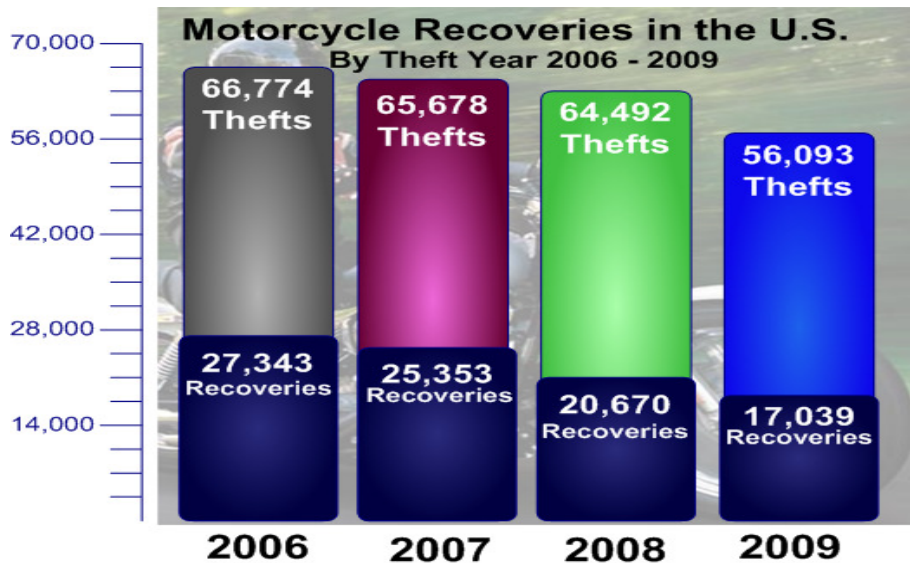
## SECTION 2: Motorcycle Recoveries in the U.S. 2006-2009

This section analyzes motorcycle recoveries in the U.S. from 2006 through 2009. There were 90,405 motorcycle recoveries associated with the 253,037 motorcycle thefts in the U.S. from 2006 through 2009. The following subsections further analyze these 90,405 motorcycle recoveries by Theft Year, Recovery Month, Recovery State, and motorcycle Make.

### Motorcycle Recoveries: By Theft Year

The following charts show the number of motorcycle recoveries and recovery rates in the U.S. by Theft Year, from 2006 through 2009, regardless of the date of recovery. From the 253,037 motorcycle thefts between 2006 and 2009, there were 90,405 motorcycles recovered. The average recovery rate of all motorcycle thefts from 2006 through 2009 was 35.7%. There was a decreasing trend in the number of motorcycle recoveries by Theft Year from 2006 through 2009. The year 2006 had the most motorcycle recoveries (27,343) and greatest recovery rate (40.9%). However, motorcycles stolen in 2006 had the longest period of time to be recovered.

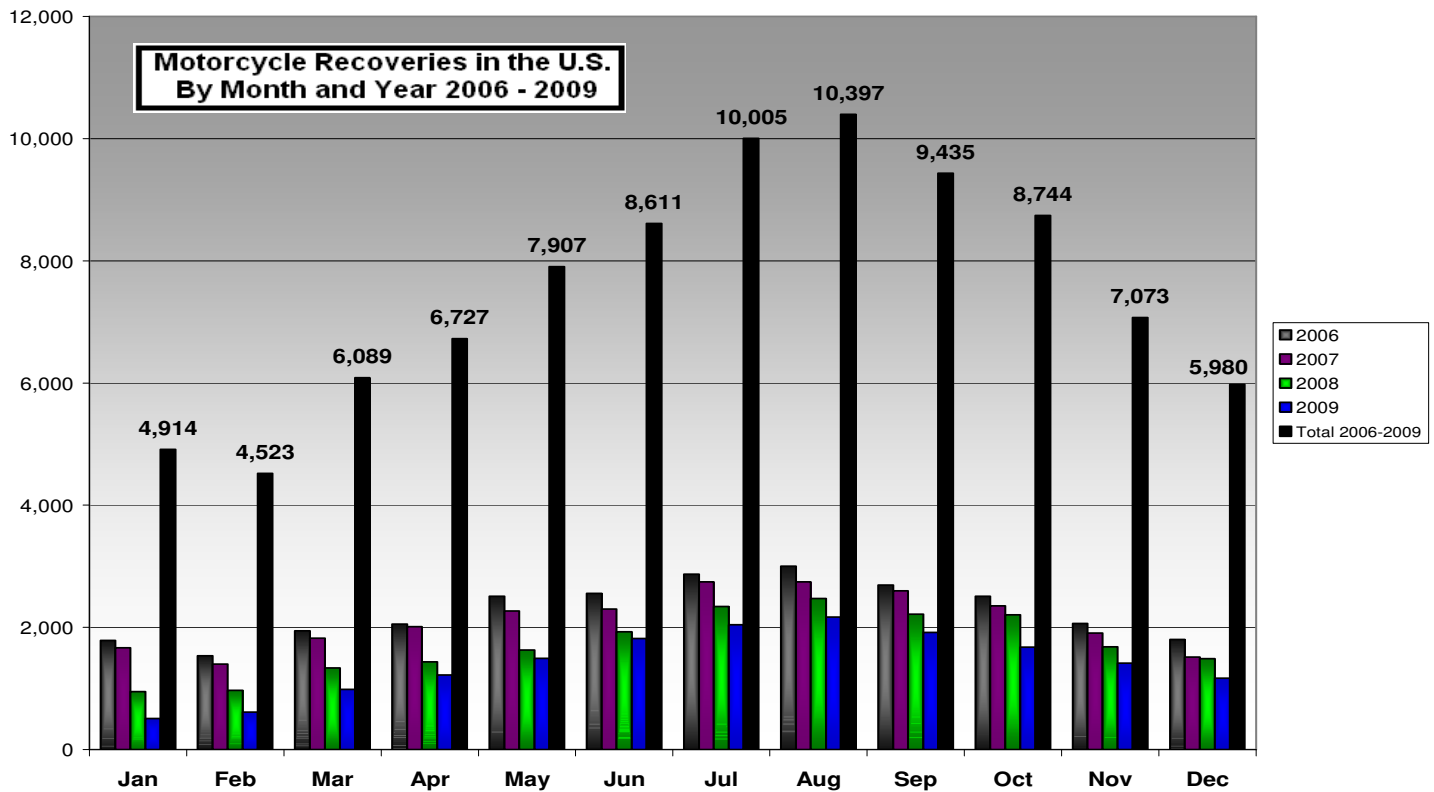
Year	Number of Thefts	Number of Recoveries	Recovery Rate
2006	66,774	27,343	40.9%
2007	65,678	25,353	38.6%
2008	64,492	20,670	32.1%
2009	56,093	17,039	30.4%
<b>Total 2006-2009</b>	<b>253,037</b>	<b>90,405</b>	<b>35.7%</b>



### Motorcycle Recoveries: By Recovery Month and Year

The following graph shows the number of motorcycle recoveries in the U.S. by Recovery Month and Year from 2006 through 2009. The number of motorcycle recoveries in each month correlates to the number of motorcycle thefts for that month. July and August were the months with the greatest number of motorcycle recoveries (10,005 recoveries in July and 10,397 recoveries in August) and were also the months with the greatest number of thefts. The months with the fewest number of motorcycle recoveries were January (4,914 recoveries) and February (4,523 recoveries).

	2006	2007	2008	2009	Total 2006-2009
Jan	1,789	1,666	949	510	4,914
Feb	1,534	1,403	969	617	4,523
Mar	1,943	1,826	1,334	986	6,089
Apr	2,054	2,013	1,437	1,223	6,727
May	2,513	2,267	1,632	1,495	7,907
Jun	2,559	2,305	1,930	1,817	8,611
Jul	2,870	2,746	2,347	2,042	10,005
Aug	3,006	2,747	2,474	2,170	10,397
Sep	2,696	2,600	2,220	1,919	9,435
Oct	2,511	2,352	2,206	1,675	8,744
Nov	2,065	1,910	1,683	1,415	7,073
Dec	1,803	1,518	1,489	1,170	5,980
<b>Totals</b>	<b>27,343</b>	<b>25,353</b>	<b>20,670</b>	<b>17,039</b>	<b>90,405</b>



### Motorcycle Recoveries: By Recovery State

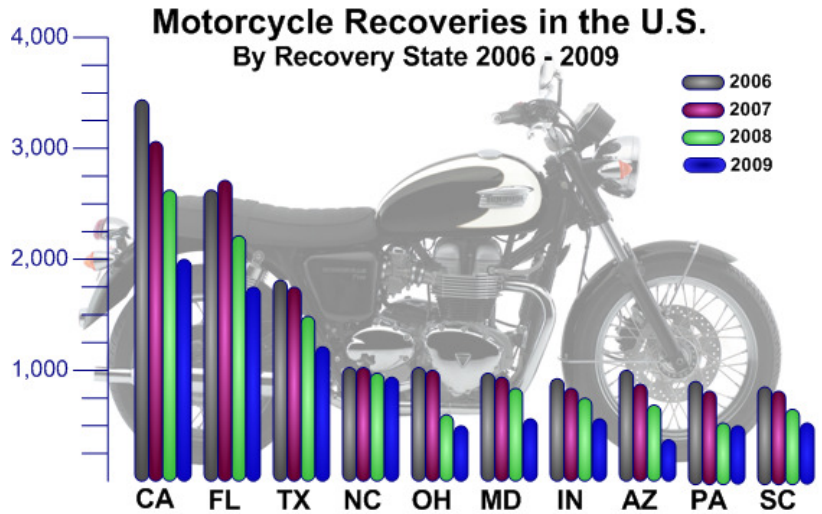
The following table displays the number of motorcycle recoveries by the Recovery State (including Washington D.C. and Puerto Rico) for each year from 2006 through 2009. The chart ranks the states based on the total number of motorcycle recoveries for all years 2006 through 2009. There were 88,163 motorcycle recoveries that listed a Recovery State (2,242 recoveries did not list a Recovery State).

Rank	State	2006	2007	2008	2009	Total 2006 - 2009
1	CA	3,343	3,031	2,604	2,070	11,048
2	FL	2,607	2,733	2,232	1,720	9,292
3	TX	1,806	1,744	1,472	1,197	6,219
4	NC	1,095	1,084	955	859	3,993
5	OH	1,101	996	593	517	3,207
6	MD	916	854	798	597	3,165
7	IN	842	798	762	573	2,975
8	AZ	954	816	635	355	2,760
9	PA	872	711	527	497	2,607
10	SC	735	715	630	525	2,605
11	GA	772	651	548	554	2,525
12	WA	901	660	426	387	2,374
13	MO	628	659	553	380	2,220
14	KY	664	609	433	362	2,068
15	NY	563	500	450	371	1,884
16	VA	525	459	465	385	1,834
17	MI	526	555	391	298	1,770
18	IL	522	465	350	406	1,743
19	AR	575	459	352	312	1,698
20	CO	504	415	303	242	1,464
21	OK	486	375	347	247	1,455
22	AL	406	433	262	228	1,329
23	NV	434	338	282	256	1,310
24	LA	358	364	288	231	1,241
25	TN	296	346	335	259	1,236
26	NJ	399	309	307	197	1,212
27	MA	380	312	210	219	1,121
28	WI	294	254	289	185	1,022
29	MN	342	293	187	153	975
30	HI	275	245	237	211	968
31	MS	240	309	228	184	961
32	OR	298	255	197	139	889
33	NM	189	205	198	202	794
34	CT	217	196	195	162	770
35	KS	193	253	169	105	720
36	PR	309	172	117	87	685
37	UT	187	207	150	136	680
38	IA	194	183	109	115	601
39	ID	136	119	70	47	372
40	DE	116	91	56	75	338
41	WV	69	94	84	68	315
42	DC	73	71	50	67	261
43	MT	85	67	50	52	254
44	RI	66	40	42	46	194



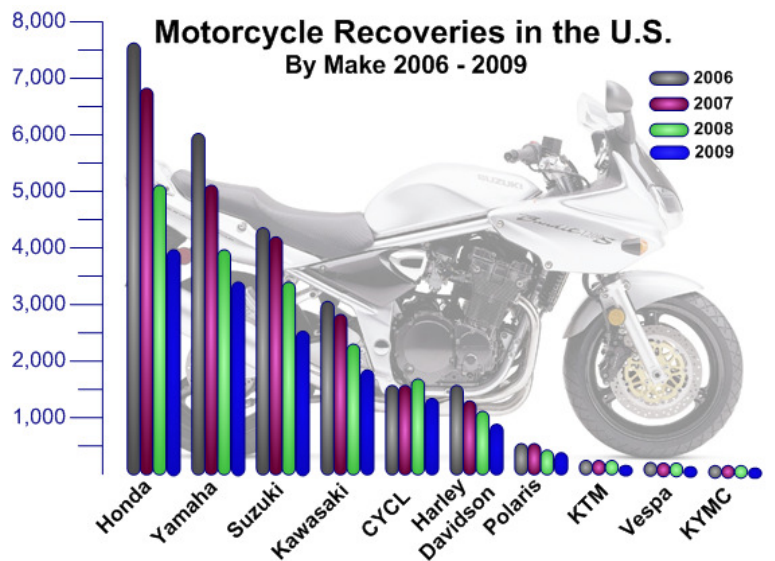
Rank	State	2006	2007	2008	2009	Total 2006 - 2009
45	NE	59	62	37	35	193
46	NH	52	39	34	42	167
47	ME	35	49	34	28	146
48	AK	77	30	17	17	141
49	WY	24	40	24	33	121
50	VT	31	26	30	17	104
51	SD	24	21	26	20	91
52	ND	10	12	10	14	46
	Unknown	538	629	520	555	2,242
	<b>Total States</b>	<b>27,343</b>	<b>25,353</b>	<b>20,670</b>	<b>17,039</b>	<b>90,405</b>

The adjacent graph shows the Top 10 States with the greatest number of motorcycle recoveries from 2006 through 2009. The Top 10 States accounted for 47,871 motorcycle recoveries, or 54.3%, of the 88,163 motorcycle recoveries that identified a Recovery State. The state with the most motorcycle recoveries was California with 11,048 motorcycle recoveries, or 12.5%, of the 88,163 motorcycle recoveries. Each of the Top 10 States had a decreasing trend in the number of motorcycle recoveries from 2006 to 2009.



**Motorcycle Recoveries: By Motorcycle Make**

A total of 593 different motorcycle Makes were identified within the 90,405 motorcycle recoveries in the U.S. from 2006 through 2009. The following graphs display the Top 10 Makes with the greatest number of motorcycle recoveries. The Top 10 Makes accounted for 81,135 motorcycle recoveries, or 89.7%, of the 90,405 motorcycle thefts. The Make with the most motorcycle recoveries was Honda with 23,680, or 26.2% of the total number of motorcycle recoveries. Most of the Top 10 Makes had a decreasing trend in the number of motorcycle recoveries from 2006 through 2009. KTM and Vespa had slight increases in the number of motorcycle recoveries from 2006 through 2008.



\*"CYCL" is used when the make is unknown or not listed.

Rank	Make	2006	2007	2008	2009	Total 2006-2009
1	Honda	7,664	6,851	5,129	4,036	23,680
2	Yamaha	5,989	5,162	3,927	3,286	18,364
3	Suzuki	4,356	4,250	3,305	2,582	14,493
4	Kawasaki	3,017	2,794	2,245	1,847	9,903
5	CYCL*	1,560	1,550	1,637	1,379	6,126
6	Harley Davidson	1,497	1,350	1,151	916	4,914
7	Polaris	554	547	378	299	1,778
8	KTM	199	202	206	131	738
9	Vespa	145	150	162	128	585
10	KYMC	139	146	142	127	554

## Conclusion

Overall, there were 253,037 motorcycle thefts in the U.S. from 2006 through 2009. Motorcycle thefts have declined each year from 2006 through 2009: 2006 (66,774), 2007 (65,678), 2008 (64,492) and 2009 (56,093). Motorcycle thefts decreased by 16.0% in that time frame, with the most significant decline from 2008 to 2009 (13.0%). However, Georgia and Connecticut were the only states with an increase in motorcycle thefts for each year 2007 through 2009. Motorcycle thefts increased during the warmer months, as July and August had the most motorcycle thefts and December, January, and February had the least motorcycle thefts. There were more than twice as many motorcycle thefts from 2006 through 2009 in July or August than in February.

Of the 253,037 motorcycle thefts from 2006 through 2009, there were 90,405 motorcycle recoveries. The motorcycle recovery rate declined each year from 2006 through 2009: 2006 (40.9%), 2007 (38.6%), 2008 (32.1%) and 2009 (30.4%). The average recovery rate during this time frame was 35.7%. Most states had a declining trend in the number of motorcycle recoveries from 2006 through 2009; however 12 states had a slight increase in the number of recoveries from 2008 to 2009. July and August were the months with the greatest motorcycle recoveries while January and February were the months with the fewest motorcycle recoveries.

The states with the most motorcycle thefts and recoveries from 2006 through 2009 were California (29,593 thefts and 11,048 recoveries), Florida (24,015 thefts and 9,292 recoveries), and Texas (23,124 thefts and 6,219 recoveries). Honda, Yamaha, and Suzuki were the motorcycle Makes with the most motorcycle thefts and recoveries.

## Appendix:

The NCIC theft data from 2006 through 2009 was edited in the following manner:

- Records with thefts of anything other than the motorcycle model and styles<sup>3</sup> were removed.
- Records with blank or incomplete VIN fields were removed.
- Records with motorcycle parts (wheels, tracks, etc.) were removed.
- ATVs, watercraft, golf carts, motorized wheelchairs, snowmobiles, toys, go-carts, farm equipment, etc. that were mislabeled as a motorcycle style were removed.
- VIN structures that began with "ATV" were removed.

---

<sup>3</sup> There are 7 motorcycle styles identified within NCIC: minibikes, minicycles, mopeds, motorbikes, motorcycles, motorscooters, and multi-wheels manufactured for on or off-road use. These 7 styles are defined by NCIC as the following:

*Minibike*--Any motor-powered cycle with one or more of the following characteristics: less than 10-inch nominal wheel rim size; less than 40-inch wheelbase; a seat height of 25 inches or less measured from the ground to the top of the seat cushion.

*Minicycle*—A small motor-powered cycle with all capabilities, characteristics, and equipment of a motorcycle, with an engine size of less than 90 cubic centimeters (cc).

*Moped*—A motor-powered cycle with or without pedals, with a 50cc piston displacement engine, capable of two brake horsepower, or a speed not exceeding 30 mph.

*Motorbike*—A motor-powered cycle with or without pedals and a 50cc cylinder engine capable of 1.5 brake horsepower, but not exceeding 5 brake horsepower.

*Motorcycle*—A motor-powered cycle, generally powered by a 90cc or larger engine, having one or two saddles or seats.

*Motorscooter*—A low, two- or three-wheeled motor-powered cycle, having smaller wheels and less power than a motorcycle, characterized by floor boards and a seat placed so that the operator does not straddle the engine.

*Multi-wheel*—A three-, four-, or more-wheeled vehicle that was manufactured for on or off-road use.